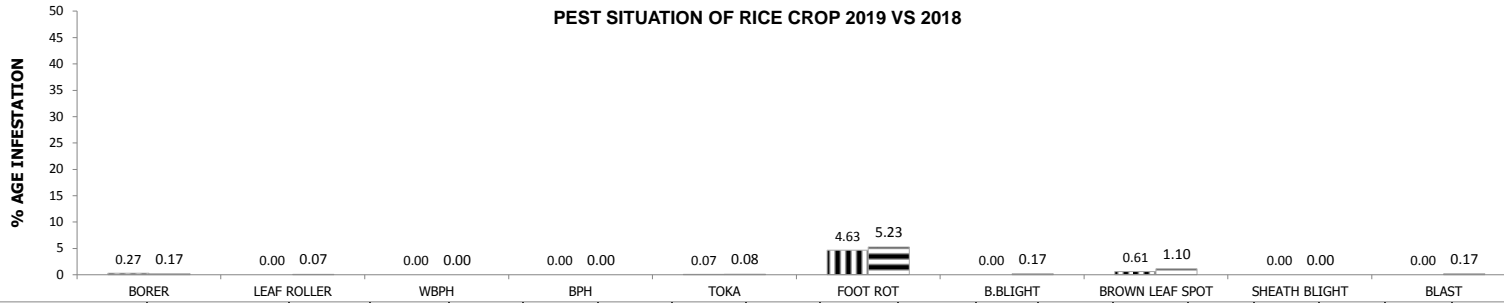


**DIRECTORATE GENERAL PEST WARNING & QUALITY CONTROL OF PESTICIDES, PUNJAB, LAHORE.**  
**PEST SCOUTING REPORT OF RICE CROP FOR 3RD WEEK OF AUGUST, 2019**

**SUMMARY**

**PEST SITUATION OF RICE CROP 2019 VS 2018**



**DISTRICT WISE SUMMARY**

DISTRICT	TEHSIL	No OF SPOTS VISITED	TOOTAL AREA VISITED	HOT SPOTS					SPOTS BELOW ETL					DISEASE INCIDENCE				
				%AGE					%AGE					%AGE				
				BORER	LEAF ROLLER	WPBH	BPH	TOKA	BORER	LEAF ROLLER	WPBH	BPH	TOKA	F.R	B.L.B	B.L.S	Sheath Blight	Blast
GUJRANWALA	Gujranwala	22	104	0.00	0.00	0.00	0.00	0.00	0.00	0.00	0.00	0.00	9.09	9.09	0.00	0.00	0.00	0.00
	Kamoki	12	91	0.00	0.00	0.00	0.00	0.00	0.00	0.00	0.00	0.00	8.33	8.33	0.00	0.00	0.00	0.00
	Noshehra Virkan	17	121	0.00	0.00	0.00	0.00	0.00	0.00	0.00	0.00	0.00	11.76	0.00	0.00	0.00	0.00	0.00
	Wazirabad	15	81	0.00	0.00	0.00	0.00	0.00	0.00	0.00	0.00	0.00	13.33	0.00	0.00	0.00	0.00	0.00
HAFIZABAD	Hafizabad	45	476	0.00	0.00	0.00	0.00	0.00	2.22	0.00	0.00	0.00	26.67	15.56	0.00	0.00	0.00	0.00
	Pindi Bhatian	31	454	0.00	0.00	0.00	0.00	0.00	0.00	0.00	0.00	0.00	9.68	6.45	0.00	16.13	0.00	0.00
SIALKOT	Sialkot	51	456	0.00	0.00	0.00	0.00	0.00	0.00	0.00	0.00	0.00	0.00	7.84	0.00	0.00	0.00	0.00
	Sambrial	36	414	0.00	0.00	0.00	0.00	0.00	0.00	0.00	0.00	0.00	0.00	8.33	0.00	0.00	0.00	0.00
	Daska	45	528	0.00	0.00	0.00	0.00	0.00	0.00	0.00	0.00	0.00	0.00	4.44	0.00	0.00	0.00	0.00
	Pasur	60	612	0.00	0.00	0.00	0.00	0.00	0.00	0.00	0.00	0.00	0.00	5.00	0.00	0.00	0.00	0.00
NAROWAL	Narowal	45	378	0.00	0.00	0.00	0.00	0.00	0.00	4.44	0.00	0.00	0.00	13.33	0.00	0.00	0.00	0.00
NAROWAL	Zafarwal	21	211	0.00	0.00	0.00	0.00	0.00	0.00	9.52	0.00	0.00	0.00	4.76	0.00	0.00	0.00	0.00
NAROWAL	Baddomalhi	50	267	0.00	0.00	0.00	0.00	0.00	0.00	0.00	0.00	0.00	0.00	10.00	0.00	0.00	0.00	0.00
	Shakar Garh	37	267	0.00	0.00	0.00	0.00	0.00	0.00	0.00	0.00	0.00	0.00	8.11	0.00	0.00	0.00	0.00
GUJRAT	Gujrat	31	241	0.00	0.00	0.00	0.00	0.00	0.00	0.00	0.00	0.00	25.81	3.23	0.00	0.00	0.00	0.00
M.B.DIN	Phalia	20	140	0.00	0.00	0.00	0.00	0.00	5.00	0.00	0.00	0.00	10.00	5.00	0.00	5.00	0.00	0.00
	M.B.Din	18	112	0.00	0.00	0.00	0.00	0.00	5.56	0.00	0.00	0.00	11.11	5.56	0.00	0.00	0.00	0.00
	Malikwal	26	190	0.00	0.00	0.00	0.00	0.00	0.00	0.00	0.00	0.00	19.23	11.54	0.00	0.00	0.00	0.00
LAHORE	Lahore	77	803	2.60	0.00	0.00	0.00	1.30	7.79	1.30	0.00	0.00	12.99	3.90	0.00	0.00	0.00	0.00
SHEIKHUPURA	Sheikhupura	24	157	0.00	0.00	0.00	0.00	0.00	0.00	0.00	0.00	0.00	12.50	8.33	0.00	0.00	0.00	0.00
	Safdarabad	17	244	0.00	0.00	0.00	0.00	0.00	11.76	11.76	0.00	0.00	23.53	17.65	0.00	0.00	0.00	0.00
	Ferozwala	36	169	0.00	0.00	0.00	0.00	0.00	5.56	2.78	0.00	0.00	5.56	16.67	0.00	0.00	0.00	0.00
	Muridke	24	284	0.00	0.00	0.00	0.00	0.00	0.00	0.00	0.00	0.00	12.50	8.33	0.00	0.00	0.00	0.00
NANKANA SAHIB.	Nankana Sahib	36	411	0.00	0.00	0.00	0.00	0.00	2.78	2.78	0.00	0.00	5.56	2.78	0.00	0.00	0.00	0.00
	Sangla Hill	34	175	0.00	0.00	0.00	0.00	0.00	5.88	2.94	0.00	0.00	0.00	0.00	0.00	0.00	0.00	0.00
	Shahkot	40	269	0.00	0.00	0.00	0.00	0.00	5.00	5.00	0.00	0.00	5.00	5.00	0.00	0.00	0.00	0.00
KASUR	Kasur	31	124	0.00	0.00	0.00	0.00	0.00	6.45	0.00	0.00	0.00	12.90	0.00	0.00	0.00	0.00	0.00
	Chunian	43	345	0.00	0.00	0.00	0.00	0.00	6.98	0.00	0.00	0.00	16.28	0.00	0.00	0.00	0.00	0.00
	Pattoki	28	78	0.00	0.00	0.00	0.00	0.00	17.86	7.14	0.00	0.00	14.29	0.00	0.00	0.00	0.00	0.00
FAISALABAD	Jaranwala	32	143.5	0.00	0.00	0.00	0.00	0.00	9.38	0.00	0.00	0.00	6.25	3.13	0.00	0.00	0.00	0.00
	Chak Jhumra	31	133	0.00	0.00	0.00	0.00	0.00	6.45	0.00	0.00	0.00	6.45	0.00	0.00	0.00	0.00	0.00
CHINIOT	Chiniot	56	374	0.00	0.00	0.00	0.00	0.00	7.14	0.00	0.00	0.00	16.07	1.79	0.00	0.00	0.00	0.00
JHANG	Shorkot	15	67	0.00	0.00	0.00	0.00	0.00	13.33	0.00	0.00	0.00	0.00	0.00	0.00	0.00	0.00	0.00
T.T. SINGH	Kamalia	14	69	0.00	0.00	0.00	0.00	0.00	0.00	0.00	0.00	0.00	0.00	0.00	0.00	0.00	0.00	0.00
	Pirmahal	14	86	0.00	0.00	0.00	0.00	0.00	14.29	0.00	0.00	0.00	7.14	0.00	0.00	0.00	0.00	0.00
OKARA	Depalpur	34	327	0.00	0.00	0.00	0.00	0.00	11.76	2.94	0.00	0.00	8.82	0.00	0.00	0.00	0.00	0.00

DISTRICT WISE SUMMARY																		
DISTRICT	TEHSIL	No OF SPOTS VISITED	TOATAL AREA VISITED	HOT SPOTS					SPOTS BELOW ETL					DISEASE INCIDENCE				
				%AGE					%AGE					%AGE				
				BORER	LEAF ROLLER	WPBH	BPH	TOKA	BORER	LEAF ROLLER	WPBH	BPH	TOKA	F.R	B.L.B	B.L.S	Sheath Blight	Blast
PAKPATTAN	Pakpattan	35	174	0.00	0.00	0.00	0.00	0.00	5.71	0.00	0.00	0.00	2.86	0.00	0.00	0.00	0.00	0.00
BAHAWALPUR	Bahawalpur	10	90	0.00	0.00	0.00	0.00	0.00	0.00	0.00	0.00	0.00	0.00	0.00	0.00	0.00	0.00	0.00
	Hasilpur	15	73	0.00	0.00	0.00	0.00	0.00	0.00	0.00	0.00	0.00	0.00	0.00	0.00	0.00	0.00	0.00
	Ahmedpur	5	13	0.00	0.00	0.00	0.00	0.00	0.00	0.00	0.00	0.00	0.00	0.00	0.00	0.00	0.00	0.00
	Yazman	8	102	0.00	0.00	0.00	0.00	0.00	0.00	0.00	0.00	0.00	0.00	0.00	0.00	0.00	0.00	0.00
BAHAWALNAGAR	Minchinabad	23	209	4.35	0.00	0.00	0.00	0.00	26.09	21.74	0.00	0.00	13.04	0.00	0.00	13.04	0.00	0.00
SAHIWAL	Sahiwal	23	144	4.35	0.00	0.00	0.00	0.00	13.04	8.70	0.00	0.00	17.39	0.00	0.00	0.00	0.00	0.00
	Sargodha	15	106.5	0.00	0.00	0.00	0.00	0.00	0.00	0.00	0.00	0.00	13.33	0.00	0.00	0.00	0.00	0.00
SARGODHA	Shahpur	7	68	0.00	0.00	0.00	0.00	0.00	0.00	0.00	0.00	0.00	0.00	0.00	0.00	0.00	0.00	0.00
	Bhalwal	4	5	0.00	0.00	0.00	0.00	0.00	0.00	0.00	0.00	0.00	0.00	0.00	0.00	0.00	0.00	0.00
	Khushab	21	50	0.00	0.00	0.00	0.00	0.00	0.00	0.00	0.00	0.00	0.00	0.00	0.00	0.00	0.00	0.00
	Quaidabad	6	13	0.00	0.00	0.00	0.00	0.00	0.00	0.00	0.00	0.00	16.67	0.00	0.00	0.00	0.00	0.00
MULTAN	Multan	10	200	0.00	0.00	0.00	0.00	0.00	0.00	0.00	0.00	0.00	0.00	0.00	0.00	0.00	0.00	0.00
	Shujabad	6	35	0.00	0.00	0.00	0.00	0.00	50.00	0.00	0.00	0.00	0.00	0.00	0.00	0.00	0.00	0.00
	Jalal Pur	7	58	0.00	0.00	0.00	0.00	0.00	0.00	0.00	0.00	0.00	0.00	0.00	0.00	0.00	0.00	0.00
KHANEWAL	Khanewal	3	9	0.00	0.00	0.00	0.00	0.00	0.00	0.00	0.00	0.00	0.00	0.00	0.00	0.00	0.00	0.00
	Jahanain	2	6	0.00	0.00	0.00	0.00	0.00	0.00	0.00	0.00	0.00	0.00	50.00	0.00	0.00	0.00	0.00
	Kabirwala	5	44	0.00	0.00	0.00	0.00	0.00	0.00	0.00	0.00	0.00	0.00	20.00	0.00	0.00	0.00	0.00
	Mian Channu	10	46	0.00	0.00	0.00	0.00	0.00	0.00	0.00	0.00	0.00	0.00	0.00	0.00	0.00	0.00	0.00
VEHARI	Vehari	5	27	0.00	0.00	0.00	0.00	0.00	40.00	20.00	0.00	0.00	0.00	0.00	0.00	0.00	0.00	0.00
	Mailsi	7	28	0.00	0.00	0.00	0.00	0.00	14.29	0.00	0.00	0.00	0.00	0.00	0.00	0.00	0.00	0.00
	Burewala	8	85	0.00	0.00	0.00	0.00	0.00	25.00	12.50	0.00	0.00	0.00	0.00	0.00	0.00	0.00	0.00
LODHRAN	Lodhran	8	39	0.00	0.00	0.00	0.00	0.00	0.00	12.50	0.00	0.00	0.00	0.00	0.00	0.00	0.00	0.00
	Dunya Pur	6	41	0.00	0.00	0.00	0.00	0.00	0.00	33.33	0.00	0.00	0.00	0.00	0.00	0.00	0.00	0.00
	Kehror Pacca	4	38	0.00	0.00	0.00	0.00	0.00	0.00	25.00	0.00	0.00	0.00	0.00	0.00	0.00	0.00	0.00
MUZAFFARGARH	Kot Addu	6	19	0.00	0.00	0.00	0.00	0.00	0.00	0.00	0.00	0.00	0.00	0.00	0.00	0.00	0.00	0.00
	Jatoi	9	57	0.00	0.00	0.00	0.00	0.00	0.00	44.44	0.00	0.00	33.33	0.00	0.00	0.00	0.00	0.00
LAYYAH	Layyah	5	35	0.00	0.00	0.00	0.00	0.00	0.00	0.00	0.00	0.00	40.00	0.00	0.00	0.00	0.00	0.00
	Karor	5	13	0.00	0.00	0.00	0.00	0.00	0.00	0.00	0.00	0.00	40.00	0.00	0.00	0.00	0.00	0.00
D.G.KHAN	D.G Khan	9	55	0.00	0.00	0.00	0.00	0.00	0.00	0.00	0.00	0.00	0.00	0.00	0.00	0.00	0.00	0.00
	Kot chutta	6	14	0.00	0.00	0.00	0.00	0.00	0.00	0.00	0.00	0.00	0.00	0.00	0.00	0.00	0.00	0.00
	Taunsa	6	15	0.00	0.00	0.00	0.00	0.00	0.00	0.00	0.00	0.00	0.00	0.00	0.00	0.00	0.00	0.00
RAJANPUR	Rojhan	3	12	0.00	0.00	0.00	0.00	0.00	0.00	0.00	0.00	0.00	0.00	0.00	0.00	0.00	0.00	0.00
% Age	3rd week of Aug,2019	1470	11325	0.27	0.00	0.00	0.00	0.07	4.35	2.18	0.00	0.00	7.96	4.63	0.00	0.61	0.00	0.00
	3rd week of Aug,2018	1185	10435	0.17	0.07	0.00	0.00	0.08	7.09	12.91	0.00	0.00	11.73	5.23	0.17	1.10	0.00	0.17
OVERALL NO. OF SPOTS ABOVE AND BELOW ETL																		
TOTAL	3rd week of Aug,2019	1470	11325	4	0	0	0	1	64	32	0	0	117	68	0	9	0	0
	3rd week of Aug,2018	1185	10435	2	7	0	0	1	84	153	0	0	139	62	2	13	0	2