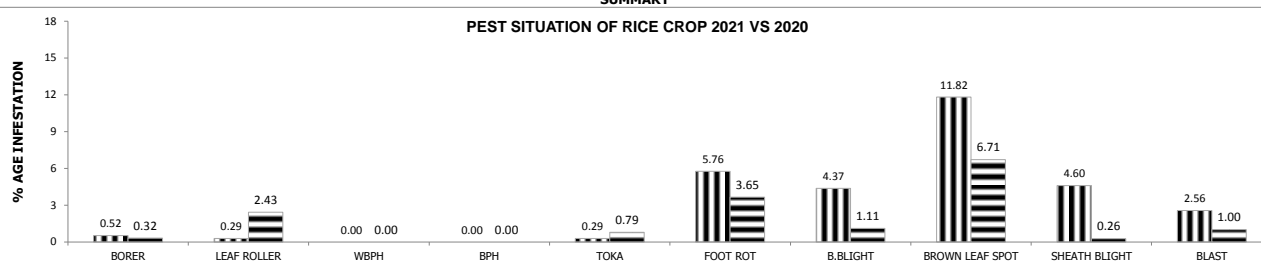


**DIRECTORATE GENERAL PEST WARNING & QUALITY CONTROL OF PESTICIDES, PUNJAB, LAHORE.**

**PEST SCOUTING REPORT OF RICE CROP FOR 3RD WEEK OF SEPTEMBER, 2021**

**SUMMARY**



**DISTRICT WISE SUMMARY**

DISTRICT	TEHSIL	No OF SPOTS VISITED	TOOTAL AREA VISITED	HOT SPOTS %AGE					SPOTS BELOW ETL %AGE					DISEASE INCIDENCE %AGE				
				BORER	LEAF ROLLER	WPBH	BPH	TOKA	BORER	LEAF ROLLER	WPBH	BPH	TOKA	F.R	B.L.B	B.L.S	Sheath Blight	Blast
				GUJRANWALA	Gujranwala	21	223.25	0.00	0.00	0.00	0.00	0.00	4.76	0.00	0.00	0.00	38.10	0.00
	Kamoki	28	219	0.00	0.00	0.00	0.00	0.00	0.00	0.00	0.00	0.00	14.29	0.00	7.14	10.71	14.29	0.00
	Noshehra Virkan	20	285.5	0.00	0.00	0.00	0.00	0.00	10.00	0.00	0.00	0.00	35.00	35.00	5.00	25.00	20.00	0.00
	Wazirabad	34	391	0.00	0.00	0.00	0.00	0.00	0.00	0.00	0.00	0.00	35.29	2.94	0.00	29.41	14.71	0.00
HAFAZABAD	Hafizabad	47	542	0.00	0.00	0.00	0.00	0.00	4.26	0.00	0.00	0.00	34.04	6.38	0.00	34.04	0.00	0.00
	Pindi Bhatian	37	326	0.00	0.00	0.00	0.00	0.00	0.00	0.00	0.00	0.00	24.32	2.70	0.00	18.92	0.00	0.00
SIALKOT	Sialkot	25	230	0.00	0.00	0.00	0.00	0.00	8.00	8.00	0.00	0.00	12.00	0.00	28.00	4.00	4.00	0.00
	Sambrial	25	180	0.00	0.00	0.00	0.00	4.00	0.00	8.00	0.00	0.00	16.00	0.00	4.00	24.00	0.00	0.00
	Daska	30	319	0.00	0.00	0.00	0.00	0.00	0.00	3.33	0.00	0.00	23.33	0.00	20.00	16.67	0.00	0.00
	Pasur	27	250	0.00	0.00	0.00	0.00	0.00	0.00	11.11	0.00	0.00	7.41	0.00	29.63	7.41	0.00	0.00
NAROWAL	Narowal	27	256	0.00	0.00	0.00	0.00	0.00	0.00	0.00	0.00	14.81	14.81	7.41	0.00	7.41	0.00	0.00
	Zafarwal	37	142	0.00	0.00	0.00	0.00	0.00	0.00	0.00	0.00	0.00	35.14	5.41	0.00	0.00	0.00	0.00
	Baddomalhi	24	333	0.00	0.00	0.00	0.00	0.00	4.17	0.00	0.00	12.50	16.67	0.00	29.17	0.00	0.00	0.00
	Shakar Garh	25	230	0.00	0.00	0.00	0.00	0.00	0.00	0.00	4.00	0.00	28.00	0.00	0.00	28.00	8.00	0.00
GUJRAT	Gujrat	18	163	0.00	0.00	0.00	0.00	0.00	0.00	0.00	0.00	0.00	38.89	0.00	5.56	22.22	0.00	0.00
	Kharian	15	106	0.00	0.00	0.00	0.00	0.00	0.00	0.00	0.00	0.00	40.00	0.00	6.67	26.67	0.00	0.00
	Jalal Pur Jattan	11	62	0.00	0.00	0.00	0.00	0.00	0.00	0.00	0.00	0.00	45.45	0.00	0.00	27.27	9.09	0.00
	Sarai Alamgir	8	127	0.00	0.00	0.00	0.00	0.00	12.50	12.50	0.00	0.00	25.00	0.00	0.00	0.00	0.00	0.00
M.B.DIN	Phalia	26	93	0.00	0.00	0.00	0.00	3.85	11.54	7.69	0.00	0.00	15.38	3.85	23.08	26.92	7.69	0.00
	M.B.Din	24	117	4.17	0.00	0.00	0.00	8.33	8.33	20.83	4.17	0.00	16.67	8.33	25.00	29.17	12.50	0.00
	Malikwal	18	55	0.00	0.00	0.00	0.00	0.00	5.56	11.11	0.00	0.00	16.67	5.56	27.78	27.78	11.11	5.56
LAHORE	Lahore	64	662	3.13	0.00	0.00	0.00	0.00	17.19	17.19	0.00	0.00	29.69	0.00	4.69	1.56	17.19	0.00
SHEIKHUPURA	Sheikhupura	39	280	0.00	0.00	0.00	0.00	0.00	2.56	2.56	0.00	0.00	15.38	5.13	7.69	5.13	0.00	0.00
	Safdarabad	33	215	0.00	0.00	0.00	0.00	0.00	12.12	15.15	0.00	0.00	15.15	9.09	0.00	3.03	3.03	0.00
	Sharqpur	43	297	0.00	0.00	0.00	0.00	0.00	0.00	0.00	2.33	0.00	6.98	2.33	0.00	2.33	2.33	0.00
	Ferozwala	19	80	0.00	0.00	0.00	0.00	0.00	0.00	0.00	0.00	0.00	10.53	5.26	0.00	21.05	36.84	5.26
	Muridke	35	259	0.00	0.00	0.00	0.00	0.00	0.00	2.86	0.00	0.00	11.43	11.43	0.00	8.57	14.29	0.00
NANKANA SAHIB.	Nankana Sahib	50	706	0.00	0.00	0.00	0.00	0.00	6.00	6.00	0.00	0.00	12.00	4.00	0.00	4.00	2.00	2.00
	Sangla Hill	10	46	0.00	0.00	0.00	0.00	0.00	10.00	10.00	0.00	0.00	20.00	10.00	10.00	20.00	10.00	0.00
	Shahkot	11	58.5	0.00	0.00	0.00	0.00	0.00	18.18	9.09	0.00	0.00	36.36	9.09	0.00	9.09	0.00	0.00
KASUR	Kasur	42	145	0.00	0.00	0.00	0.00	0.00	7.14	0.00	0.00	0.00	14.29	0.00	0.00	0.00	0.00	0.00
	Chunian	46	271	0.00	0.00	0.00	0.00	0.00	4.35	0.00	0.00	0.00	8.70	0.00	2.17	0.00	0.00	4.35
	Kot Radha Kishan	12	79	0.00	0.00	0.00	0.00	0.00	8.33	0.00	0.00	0.00	16.67	0.00	0.00	0.00	0.00	0.00
	Pattoki	35	114	0.00	0.00	0.00	0.00	0.00	5.71	5.71	0.00	0.00	14.29	0.00	0.00	17.14	2.86	2.86
FAISALABAD	Jaranwala	35	141.5	0.00	0.00	0.00	0.00	0.00	0.00	0.00	0.00	0.00	17.14	0.00	0.00	8.57	0.00	5.71
	Chak Jhumra	42	187	0.00	0.00	0.00	0.00	0.00	0.00	0.00	0.00	0.00	26.19	0.00	0.00	11.90	0.00	0.00
CHINIOT	Chiniot	33	204	0.00	0.00	0.00	0.00	3.03	9.09	9.09	0.00	0.00	15.15	3.03	0.00	18.18	0.00	9.09
	Bhowana	19	84	0.00	0.00	0.00	0.00	0.00	0.00	26.32	0.00	0.00	15.79	5.26	0.00	15.79	0.00	5.26
	Lalian	26	160	0.00	0.00	0.00	0.00	0.00	3.85	7.69	0.00	0.00	7.69	23.08	0.00	15.38	3.85	0.00
JHANG	Shorkot	20	83	0.00	0.00	0.00	0.00	0.00	15.00	20.00	0.00	0.00	30.00	10.00	15.00	10.00	0.00	0.00
	18-Hazari	66	182	0.00	0.00	0.00	0.00	0.00	6.06	15.15	0.00	0.00	13.64	4.55	7.58	10.61	0.00	7.58
T.T. SINGH	Kamalia	30	198	0.00	0.00	0.00	0.00	0.00	3.33	13.33	0.00	0.00	20.00	0.00	3.33	16.67	0.00	6.67
	Pirmahal	21	105	0.00	0.00	0.00	0.00	0.00	9.52	19.05	0.00	0.00	57.14	23.81	19.05	57.14	0.00	23.81
OKARA	Depalpur	21	136	9.52	4.76	0.00	0.00	0.00	38.10	14.29	0.00	4.76	28.57	14.29	0.00	0.00	9.52	19.05
PAKPATTAN	Pakpattan	27	170	7.41	0.00	0.00	0.00	0.00	18.52	11.11	0.00	3.70	7.41	3.70	0.00	0.00	3.70	7.41
BAHAWALPUR	Bahawalpur	19	181	0.00	0.00	0.00	0.00	0.00	26.32	36.84	0.00	26.32	0.00	0.00	0.00	0.00	0.00	0.00
	Hasilpur	4	105	0.00	0.00	0.00	0.00	0.00	100.00	50.00	75.00	0.00	0.00	0.00	0.00	0.00	0.00	0.00

DISTRICT WISE SUMMARY																		
DISTRICT	TEHSIL	No OF SPOTS VISITED	TOATAL AREA VISITED	HOT SPOTS					SPOTS BELOW ETL					DISEASE INCIDENCE				
				%AGE					%AGE					%AGE				
				BORER	LEAF ROLLER	WPBH	BPH	TOKA	BORER	LEAF ROLLER	WPBH	BPH	TOKA	F.R	B.L.B	B.L.S	Sheath Blight	Blast
	Ahmadpur	6	16	0.00	0.00	0.00	0.00	0.00	66.67	50.00	0.00	0.00	0.00	0.00	0.00	0.00	0.00	0.00
	Yazman	9	85	0.00	0.00	0.00	0.00	0.00	33.33	0.00	0.00	0.00	0.00	0.00	0.00	0.00	0.00	0.00
BAHAWALNAGAR	Minchinabad	26	288	3.85	0.00	0.00	0.00	0.00	38.46	19.23	3.85	0.00	7.69	0.00	0.00	7.69	3.85	0.00
SAHIWAL	Sahiwal	24	231	0.00	0.00	0.00	0.00	0.00	20.83	8.33	0.00	0.00	8.33	16.67	0.00	0.00	0.00	0.00
R.Y.Khan	R.Y.Khan	4	9	0.00	0.00	0.00	0.00	0.00	100.00	50.00	0.00	0.00	0.00	0.00	0.00	0.00	0.00	0.00
	Sadiqabad	4	9	0.00	0.00	0.00	0.00	0.00	50.00	50.00	0.00	0.00	0.00	0.00	0.00	0.00	0.00	0.00
	Liaqatpur	3	7	0.00	0.00	0.00	0.00	0.00	66.67	66.67	0.00	0.00	0.00	0.00	0.00	0.00	0.00	0.00
	Khan pur	5	20	0.00	0.00	0.00	0.00	0.00	40.00	20.00	0.00	0.00	0.00	0.00	0.00	0.00	0.00	0.00
SARGODHA	Sargodha	25	103	0.00	0.00	0.00	0.00	0.00	12.00	4.00	0.00	0.00	52.00	20.00	0.00	36.00	36.00	4.00
	Shahpur	14	75	0.00	0.00	0.00	0.00	0.00	0.00	42.86	0.00	0.00	21.43	28.57	7.14	7.14	0.00	0.00
	Bhera	24	128	0.00	0.00	0.00	0.00	0.00	25.00	4.17	0.00	0.00	45.83	20.83	0.00	12.50	33.33	4.17
	Sahiwal	17	95	0.00	0.00	0.00	0.00	0.00	11.76	5.88	0.00	0.00	76.47	17.65	0.00	52.94	11.76	17.65
	Kotmomin	11	18.5	0.00	0.00	0.00	0.00	0.00	0.00	0.00	0.00	0.00	0.00	0.00	0.00	36.36	0.00	18.18
	Sitanwali	7	9.25	0.00	0.00	0.00	0.00	0.00	28.57	28.57	0.00	0.00	57.14	14.29	0.00	28.57	0.00	0.00
KHUSHAB	Khushab	13	63	0.00	0.00	0.00	0.00	0.00	23.08	30.77	0.00	0.00	30.77	0.00	0.00	0.00	0.00	0.00
	Quaidabad	22	123	0.00	0.00	0.00	0.00	0.00	9.09	18.18	0.00	0.00	31.82	0.00	0.00	0.00	0.00	0.00
	Bhakkar	14	27	0.00	0.00	0.00	0.00	0.00	14.29	14.29	0.00	0.00	78.57	0.00	0.00	28.57	0.00	7.14
MULTAN	Multan	10	101	10.00	0.00	0.00	0.00	0.00	30.00	40.00	0.00	0.00	30.00	0.00	0.00	0.00	0.00	10.00
	Shujabad	6	36	0.00	16.67	0.00	0.00	0.00	66.67	83.33	0.00	0.00	0.00	0.00	0.00	0.00	0.00	0.00
	Jalal Pur	3	10	0.00	0.00	0.00	0.00	0.00	100.00	100.00	0.00	0.00	33.33	0.00	0.00	0.00	0.00	66.67
KHANEWAL	Khaneval	5	80	0.00	0.00	0.00	0.00	0.00	40.00	40.00	0.00	0.00	60.00	20.00	0.00	0.00	0.00	0.00
	Jahanain	5	24	0.00	0.00	0.00	0.00	0.00	20.00	40.00	0.00	0.00	40.00	20.00	0.00	0.00	0.00	0.00
	Kabirwala	8	17	0.00	0.00	0.00	0.00	0.00	12.50	37.50	0.00	0.00	50.00	37.50	0.00	0.00	0.00	0.00
	Mian Channu	6	24	0.00	0.00	0.00	0.00	0.00	33.33	50.00	0.00	0.00	50.00	33.33	0.00	0.00	0.00	0.00
VEHARI	Vehari	5	33	0.00	0.00	0.00	0.00	0.00	80.00	40.00	0.00	0.00	0.00	0.00	0.00	0.00	0.00	0.00
	Mailsi	5	16	0.00	0.00	0.00	0.00	0.00	60.00	40.00	0.00	0.00	0.00	0.00	0.00	0.00	0.00	0.00
	Burewala	5	76	0.00	0.00	0.00	0.00	0.00	60.00	40.00	0.00	0.00	0.00	0.00	0.00	0.00	0.00	0.00
LODHRAN	Lodhran	4	6	0.00	0.00	0.00	0.00	0.00	75.00	50.00	0.00	0.00	0.00	25.00	0.00	0.00	0.00	0.00
	Dunya Pur	3	12	0.00	0.00	0.00	0.00	0.00	100.00	100.00	0.00	0.00	0.00	66.67	0.00	0.00	0.00	0.00
	Kehror Pacca	5	12	0.00	0.00	0.00	0.00	0.00	100.00	80.00	0.00	0.00	0.00	40.00	0.00	0.00	0.00	0.00
MUZAFFARGARH	Kot Addu	10	76	0.00	0.00	0.00	0.00	0.00	30.00	70.00	0.00	0.00	0.00	0.00	0.00	0.00	0.00	0.00
	Jatoi	10	14	0.00	0.00	0.00	0.00	0.00	40.00	20.00	10.00	0.00	0.00	50.00	0.00	0.00	0.00	0.00
	Muzaffargarh	10	58	0.00	0.00	0.00	0.00	0.00	40.00	60.00	10.00	0.00	0.00	30.00	0.00	10.00	0.00	0.00
	Alipur	10	15	0.00	0.00	0.00	0.00	0.00	60.00	30.00	10.00	0.00	10.00	0.00	0.00	10.00	0.00	0.00
LAYYAH	Layyah	5	31	0.00	20.00	0.00	0.00	0.00	40.00	40.00	0.00	0.00	40.00	0.00	0.00	0.00	0.00	0.00
	Karor	3	10	0.00	0.00	0.00	0.00	0.00	66.67	66.67	0.00	0.00	100.00	0.00	0.00	0.00	0.00	0.00
D.G.KHAN	D.G Khan	12	29	0.00	0.00	0.00	0.00	0.00	25.00	16.67	0.00	16.67	0.00	0.00	0.00	0.00	8.33	8.33
	Kot chutta	17	132	0.00	11.76	0.00	0.00	0.00	17.65	17.65	0.00	0.00	17.65	0.00	11.76	0.00	0.00	0.00
	Taunsa	5	19	0.00	0.00	0.00	0.00	0.00	60.00	60.00	0.00	0.00	40.00	0.00	0.00	0.00	0.00	20.00
RAJANPUR	Rajanpur	3	10	0.00	0.00	0.00	0.00	0.00	33.33	33.33	0.00	0.00	0.00	0.00	0.00	0.00	0.00	0.00
	Rojhan	3	7	0.00	0.00	0.00	0.00	0.00	100.00	33.33	0.00	0.00	0.00	0.00	0.00	0.00	0.00	33.33
	Jampur	3	5	0.00	0.00	0.00	0.00	0.00	33.33	33.33	0.00	0.00	0.00	0.00	0.00	0.00	0.00	0.00
% Age	3rd week of Sep,2021	1718	11959	0.52	0.29	0.00	0.00	0.29	11.93	11.53	0.58	0.93	21.19	5.76	4.37	11.82	4.60	2.56
	3rd week of Sep,2020	1893	15246	0.32	2.43	0.00	0.00	0.79	8.40	18.38	0.00	1.00	16.75	3.65	1.11	6.71	0.26	1.00
OVERALL NO. OF SPOTS ABOVE AND BELOW ETL																		
TOTAL	3rd week of Sep,2021	1718	11959	9	5	0	0	5	205	198	10	16	364	99	75	203	79	44
	3rd week of Sep,2020	1893	15246	6	46	0	0	15	159	348	0	19	317	69	21	127	5	19