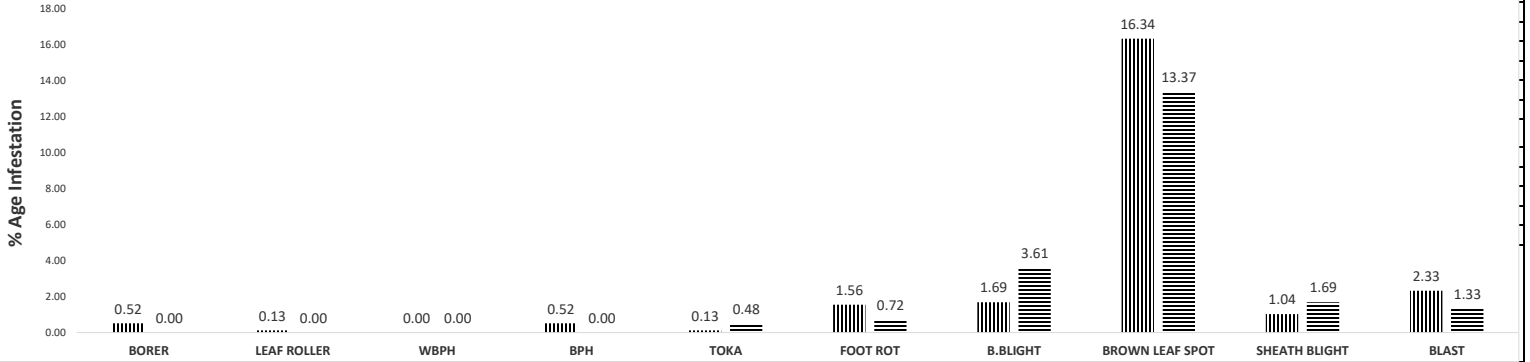


DIRECTORATE GENERAL PEST WARNING & QUALITY CONTROL OF PESTICIDES, PUNJAB, LAHORE.
PEST SCOUTING REPORT OF RICE CROP FOR 2ND WEEK OF NOVEMBER, 2022

SUMMARY

PEST SITUATION OF RICE CROP 2022 VS 2021



DISTRICT WISE SUMMARY

DISTRICT	TEHSIL	No OF SPOTS VISITED	TOATAL AREA VISITED	HOT SPOTS					SPOTS BELOW ETL					DISEASE INCIDENCE				
				%AGE					%AGE					%AGE				
				BORER	LEAF ROLLER	WPBH	BPH	TOKA	BORER	LEAF ROLLER	WPBH	BPH	TOKA	F.R	B.L.B	B.L.S	Sheath Blight	Blast
GUJRANWALA	Gujranwala	4	16.5	0.00	0.00	0.00	0.00	0.00	0.00	0.00	0.00	0.00	50.00	0.00	0.00	25.00	0.00	0.00
	Kamoki	5	13	0.00	0.00	0.00	0.00	0.00	0.00	0.00	0.00	0.00	20.00	0.00	0.00	0.00	0.00	0.00
	Noshehra Virkan	5	13.5	0.00	0.00	0.00	0.00	0.00	0.00	0.00	0.00	0.00	40.00	0.00	0.00	0.00	0.00	0.00
	Wazirabad	13	45	0.00	0.00	0.00	0.00	0.00	0.00	0.00	0.00	0.00	15.38	0.00	0.00	15.38	0.00	0.00
HAFIZABAD	Hafizabad	26	187	0.00	0.00	0.00	0.00	0.00	0.00	0.00	0.00	11.54	15.38	0.00	3.85	26.92	0.00	0.00
	Pindi Bhatian	20	139	0.00	0.00	0.00	0.00	0.00	0.00	0.00	0.00	10.00	20.00	0.00	0.00	25.00	0.00	0.00
SIALKOT	Sialkot	19	253	0.00	0.00	0.00	0.00	0.00	0.00	0.00	0.00	0.00	10.53	0.00	0.00	15.79	0.00	0.00
	Sambrial	18	124	0.00	0.00	0.00	0.00	0.00	0.00	0.00	0.00	0.00	22.22	0.00	0.00	11.11	0.00	0.00
	Daska	13	138	0.00	0.00	0.00	0.00	0.00	0.00	0.00	0.00	0.00	0.00	0.00	0.00	15.38	0.00	0.00
	Pasur	18	201.5	0.00	0.00	0.00	0.00	0.00	0.00	0.00	0.00	0.00	22.22	0.00	0.00	11.11	0.00	0.00
NAROWAL	Narowal	17	86	0.00	0.00	0.00	0.00	0.00	0.00	0.00	0.00	17.65	17.65	0.00	0.00	29.41	0.00	0.00
	Zafarwal	44	182	0.00	0.00	0.00	0.00	0.00	0.00	0.00	0.00	0.00	27.27	0.00	0.00	0.00	0.00	0.00
	Baddomalhi	17	165	0.00	0.00	0.00	0.00	0.00	0.00	0.00	0.00	23.53	11.76	0.00	0.00	52.94	0.00	0.00
	Shakar Garh	8	54	0.00	0.00	0.00	0.00	0.00	0.00	0.00	0.00	0.00	37.50	0.00	0.00	25.00	0.00	0.00
GUJRAT	Gujrat	19	256	0.00	0.00	0.00	0.00	0.00	0.00	0.00	0.00	15.79	52.63	0.00	0.00	47.37	0.00	0.00
	Kharian	5	117	0.00	0.00	0.00	0.00	0.00	0.00	0.00	0.00	40.00	40.00	0.00	0.00	20.00	0.00	0.00
	Jalal Pur Jattan	5	45.5	0.00	0.00	0.00	0.00	0.00	0.00	0.00	0.00	0.00	60.00	0.00	0.00	40.00	0.00	0.00
M.B.DIN	Phalia	13	59	0.00	0.00	0.00	0.00	0.00	7.69	0.00	0.00	15.38	23.08	0.00	0.00	30.77	0.00	7.69
	M.B.Din	17	140	0.00	0.00	0.00	0.00	0.00	5.88	0.00	0.00	11.76	11.76	0.00	0.00	41.18	0.00	5.88
	Malikwal	8	32	0.00	0.00	0.00	0.00	0.00	0.00	0.00	0.00	25.00	25.00	0.00	0.00	37.50	0.00	0.00
LAHORE	Lahore	29	154	0.00	0.00	0.00	0.00	3.45	0.00	0.00	0.00	31.03	79.31	0.00	0.00	17.24	0.00	0.00
SHEIKHUPURA	Sheikhupura	19	47	0.00	0.00	0.00	0.00	0.00	10.53	0.00	0.00	0.00	26.32	0.00	0.00	15.79	0.00	0.00
	Safdarabad	34	156	0.00	0.00	0.00	0.00	0.00	5.88	0.00	0.00	0.00	17.65	0.00	0.00	14.71	0.00	0.00
	Sharqpur	8	15	0.00	0.00	0.00	0.00	0.00	0.00	0.00	0.00	0.00	25.00	0.00	0.00	25.00	0.00	0.00
	Ferozwala	37	176	0.00	0.00	0.00	8.11	0.00	5.41	0.00	5.41	0.00	32.43	0.00	29.73	32.43	21.62	13.51
	Muridke	35	197	0.00	0.00	0.00	0.00	0.00	0.00	0.00	0.00	0.00	8.57	0.00	0.00	11.43	0.00	0.00
	Narang Mandi	11	44	0.00	0.00	0.00	0.00	0.00	0.00	0.00	0.00	0.00	9.09	0.00	0.00	18.18	0.00	0.00
NANKANA SAHIB.	Nankana Sahib	5	20	0.00	0.00	0.00	0.00	0.00	0.00	0.00	0.00	40.00	0.00	0.00	0.00	0.00	0.00	
KASUR	Kasur	17	40	0.00	0.00	0.00	0.00	0.00	0.00	0.00	0.00	5.88	5.88	0.00	0.00	5.88	0.00	0.00
	Chunian	20	45	0.00	0.00	0.00	0.00	0.00	0.00	0.00	0.00	10.00	10.00	0.00	0.00	15.00	0.00	0.00
	Kot Radha Kishan	6	15	0.00	0.00	0.00	0.00	0.00	0.00	0.00	0.00	0.00	16.67	0.00	0.00	0.00	0.00	0.00
	Pattoki	13	54	0.00	0.00	0.00	0.00	0.00	0.00	0.00	0.00	0.00	0.00	0.00	7.69	0.00	0.00	7.69
FAISALABAD	Jaranwala	11	15.5	0.00	0.00	0.00	0.00	0.00	0.00	0.00	0.00	0.00	0.00	0.00	0.00	0.00	0.00	0.00
	Chak Jhumra	7	9	0.00	0.00	0.00	0.00	0.00	0.00	0.00	0.00	0.00	0.00	0.00	0.00	0.00	0.00	0.00

DISTRICT WISE SUMMARY																			
DISTRICT	TEHSIL	No OF SPOTS VISITED	TOATAL AREA VISITED	HOT SPOTS					SPOTS BELOW ETL					DISEASE INCIDENCE					
				%AGE					%AGE					%AGE					
				BORER	LEAF ROLLER	WPBH	BPH	TOKA	BORER	LEAF ROLLER	WPBH	BPH	TOKA	F.R	B.L.B	B.L.S	Sheath Blight	Blast	
CHINIOT	Chiniot	6	21	0.00	0.00	0.00	0.00	0.00	0.00	0.00	0.00	0.00	0.00	16.67	0.00	0.00	0.00	0.00	0.00
	Bhowana	12	87	0.00	0.00	0.00	0.00	0.00	0.00	0.00	0.00	0.00	0.00	25.00	0.00	0.00	0.00	0.00	0.00
	Lalian	12	61	0.00	0.00	0.00	0.00	0.00	0.00	0.00	0.00	0.00	0.00	16.67	0.00	0.00	0.00	0.00	0.00
T.T. SINGH	Pir mahal	6	12	0.00	0.00	0.00	0.00	0.00	0.00	0.00	0.00	0.00	0.00	0.00	0.00	0.00	0.00	0.00	0.00
OKARA	Depalpur	9	17	0.00	0.00	0.00	0.00	0.00	0.00	0.00	0.00	0.00	0.00	0.00	0.00	0.00	0.00	0.00	22.22
PAKPATTAN	Pakpattan	10	18	0.00	0.00	0.00	0.00	0.00	20.00	0.00	0.00	0.00	10.00	0.00	0.00	0.00	0.00	0.00	10.00
BAHAWALPUR	Bahawalpur	3	13	0.00	0.00	0.00	0.00	0.00	0.00	0.00	0.00	66.67	0.00	0.00	0.00	0.00	0.00	0.00	0.00
	Hasilpur	3	6	0.00	0.00	0.00	0.00	0.00	0.00	0.00	0.00	33.33	0.00	0.00	0.00	0.00	0.00	0.00	0.00
	Ahmadpur	2	4	0.00	0.00	0.00	0.00	0.00	0.00	0.00	0.00	50.00	0.00	0.00	0.00	0.00	0.00	0.00	0.00
	Yazman	2	5	0.00	0.00	0.00	0.00	0.00	0.00	0.00	0.00	50.00	0.00	0.00	0.00	50.00	0.00	0.00	
BAHAWALNAGAR	Minchinabad	25	184	0.00	0.00	0.00	4.00	0.00	36.00	0.00	0.00	48.00	0.00	0.00	0.00	16.00	0.00	0.00	
	Chishtian	3	19	0.00	0.00	0.00	0.00	0.00	33.33	0.00	0.00	33.33	0.00	0.00	0.00	33.33	0.00	0.00	
	Bahawalnagar	3	20	0.00	0.00	0.00	0.00	0.00	66.67	0.00	0.00	33.33	0.00	0.00	0.00	33.33	0.00	0.00	
SAHIWAL	Sahiwal	3	5	0.00	0.00	0.00	0.00	0.00	33.33	0.00	0.00	0.00	0.00	0.00	0.00	0.00	0.00	0.00	
KHUSHAB	Khushab	34	124	0.00	0.00	0.00	0.00	0.00	5.88	0.00	0.00	5.88	11.76	0.00	0.00	20.59	0.00	8.82	
MULTAN	Multan	11	87	9.09	0.00	0.00	0.00	0.00	27.27	36.36	0.00	36.36	81.82	0.00	0.00	18.18	0.00	18.18	
	Shujabad	19	81	15.79	5.26	0.00	0.00	0.00	84.21	52.63	0.00	0.00	63.16	0.00	0.00	10.53	0.00	10.53	
	Jalal Pur	2	7	0.00	0.00	0.00	0.00	0.00	100.00	0.00	0.00	0.00	0.00	0.00	0.00	0.00	0.00	0.00	
VEHARI	Vehari	4	15	0.00	0.00	0.00	0.00	0.00	0.00	0.00	0.00	0.00	0.00	0.00	0.00	0.00	0.00	0.00	
	Mailsi	5	10	0.00	0.00	0.00	0.00	0.00	0.00	0.00	0.00	0.00	0.00	0.00	0.00	0.00	0.00	0.00	
	Burewala	5	18	0.00	0.00	0.00	0.00	0.00	0.00	0.00	0.00	0.00	0.00	0.00	0.00	0.00	0.00	0.00	
LODHRAN	Lodhran	3	24	0.00	0.00	0.00	0.00	0.00	33.33	0.00	0.00	0.00	0.00	0.00	0.00	0.00	0.00	0.00	
	Dunya Pur	2	4	0.00	0.00	0.00	0.00	0.00	0.00	0.00	0.00	0.00	0.00	0.00	0.00	0.00	0.00	0.00	
	Kehror Pacca	3	11	0.00	0.00	0.00	0.00	0.00	33.33	0.00	0.00	0.00	0.00	0.00	0.00	0.00	0.00	0.00	
	Kot Addu	6	17	0.00	0.00	0.00	0.00	0.00	33.33	0.00	0.00	0.00	50.00	66.67	0.00	0.00	0.00	0.00	
MUZAFFARGARH	Jatoi	11	27	0.00	0.00	0.00	0.00	0.00	0.00	18.18	0.00	0.00	18.18	54.55	0.00	27.27	0.00	0.00	
	Muzaffargarh	5	14	0.00	0.00	0.00	0.00	0.00	0.00	0.00	0.00	0.00	0.00	40.00	0.00	0.00	0.00	0.00	
	Alipur	10	16	0.00	0.00	0.00	0.00	0.00	70.00	40.00	0.00	0.00	10.00	0.00	0.00	0.00	0.00	0.00	
LAYYAH	Layyah	3	9	0.00	0.00	0.00	0.00	0.00	0.00	0.00	0.00	0.00	66.67	0.00	0.00	33.33	0.00	0.00	
	Karor	3	5	0.00	0.00	0.00	0.00	0.00	0.00	0.00	0.00	0.00	33.33	0.00	0.00	33.33	0.00	0.00	
% Age	2nd week of Nov,2022	771	4195.5	0.52	0.13	0.00	0.52	0.13	7.39	2.59	0.26	8.04	21.27	1.56	1.69	16.34	1.04	2.33	
	2nd week of Nov,2021	830	4172	0.00	0.00	0.00	0.00	0.48	4.82	1.69	0.48	7.11	12.41	0.72	3.61	13.37	1.69	1.33	
OVERALL NO. OF SPOTS ABOVE AND BELOW ETL																			
TOTAL	2nd week of Nov,2022	771	4196	4	1	0	4	1	57	20	2	62	164	12	13	126	8	18	
	2nd week of Nov,2021	830	4172	0	0	0	0	4	40	14	4	59	103	6	30	111	14	11	