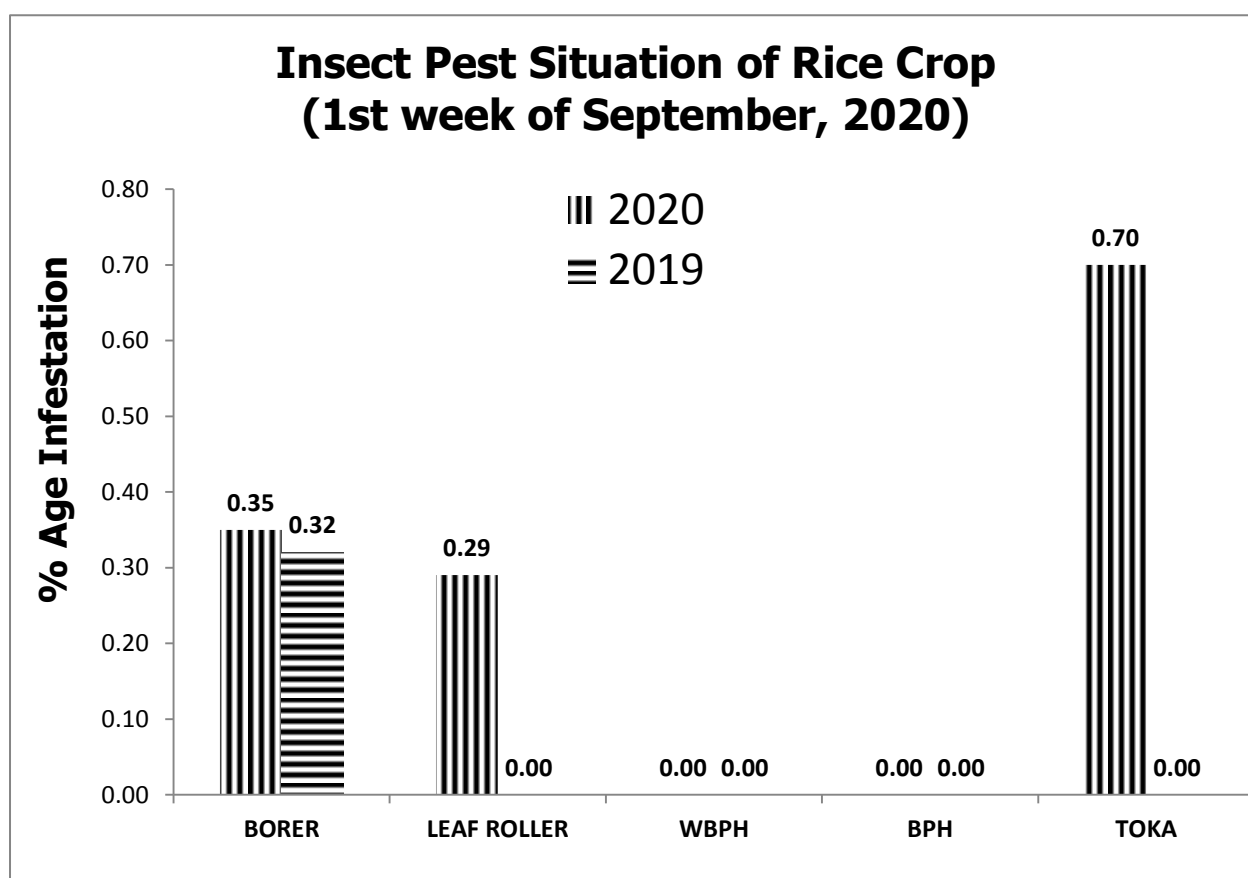
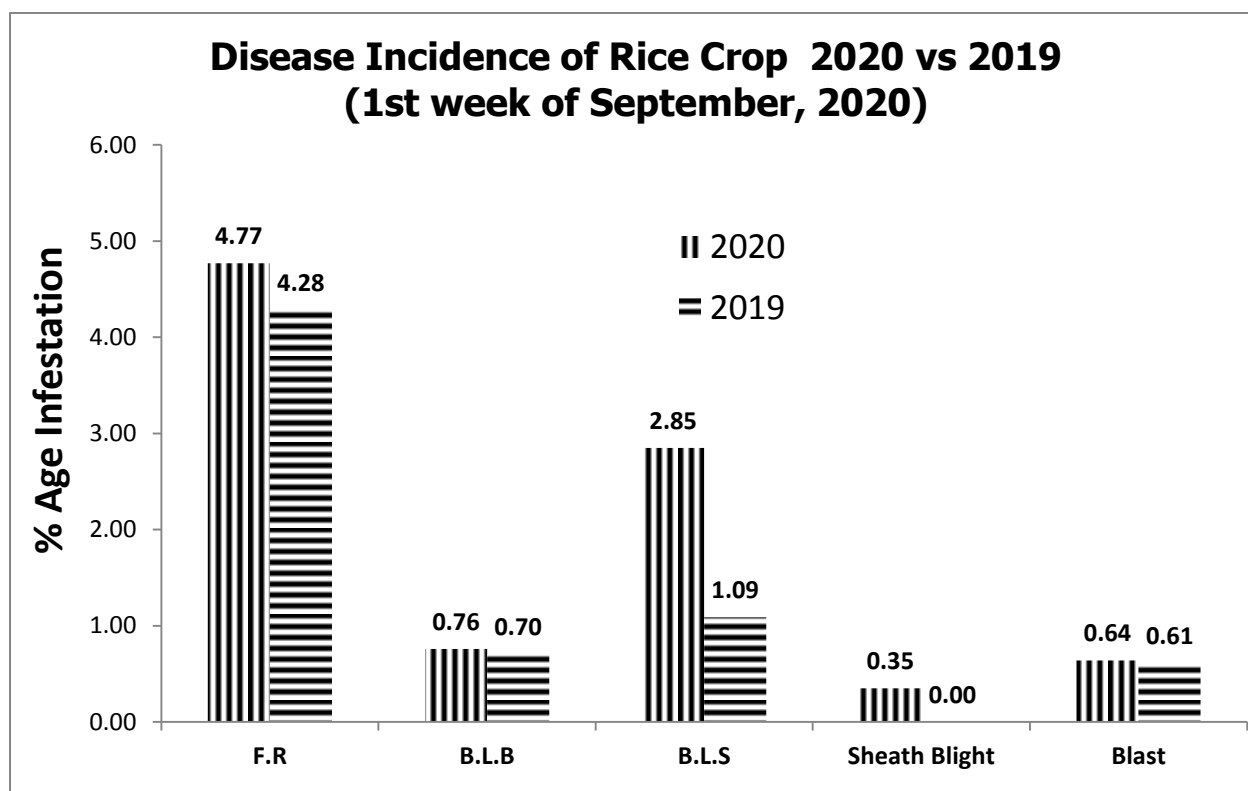


GRAPHICAL PEST SITUATION ON RICE CROP IN PUNJAB DURING 1ST WEEK OF SEPTEMBER, 2020



PEST SITUATION ON RICE CROP IN PUNJAB DURING 1ST WEEK OF SEPTEMBER, 2020

Pest Situation of Rice Pests								
Sr. No.	Pest Name	%age of spots						Remarks
		Current Week		Previous Week		Corresponding week of Last Year		
		AETL	BETL	AETL	BETL	AETL	BETL	
1	Rice Borer	0.35	8.09	0.28	8.37	0.32	6.27	Low
2	Leaf Folder	0.29	10.01	0.17	8.20	0.00	8.44	Low & Increasing
3	WPBH	0.00	0.00	0.00	0.00	0.00	0.45	-
4	BPH	0.00	0.00	0.00	0.00	0.00	0.00	-
5	TOKA	0.70	15.13	0.45	15.00	0.00	10.23	Low
6	FOOT ROT	4.77	-	5.17	-	4.28	-	Low
7	B.L.B	0.76	-	0.45	-	0.70	-	Low
8	B.L.S	2.85	-	1.57	-	1.09	-	Low
9	SHEATH BLIGHT	0.35	-	0.11	-	0.00	-	Low
10	BLAST	0.64	-	0.39	-	0.51	-	Low
NO. OF TOTAL SPOTS VISITED		1719						
TOTAL AREA VISITED (Acres)		14393.5						

Tehsil wise percentage of hot spots of Rice Borer

Sr#	TEHSIL	%AGE
1	Minchinabad	10
2	Pakpattan	6.25
3	Sahiwal	4.55

Tehsil wise percentage of hot spots of Rice Leaf Folder

Sr#	TEHSIL	%AGE
1	Khanewal	20
2	Mian Channu	16.67
2	Sahiwal	9.09
4	Minchinabad	3.33

Tehsil wise percentage of hot spots of White-Backed Plant Hopper

No hot spot found.

Tehsil wise percentage of hot spots of Brown Plant Hopper

No hot spot found.

Tehsil wise percentage of hot spots of Toka

Sr#	TEHSIL	%AGE
1	Noshera Virkan	7.14
2	Malikwal	5.26
3	Phalia	4.76
4	Muridke	4.00
5	Bhowana	3.33

6	M.B.Din	3.13
7	Chiniot	3.13
8	Pattoki	3.03
9	Safdarabad	2.04
10	Lahore	1.56
11	Sheikhupura	1.00

Tehsil wise percentage of hot spots of Foot Rot

Sr#	TEHSIL	%AGE
1	Kehror Pacca	50.00
2	Alipur	28.57
3	Jatoi	27.27
4	Dunya Pur	20.00
5	Narang Mandi	19.61
6	Ferozwala	19.23
7	Lodhran	16.67
8	Pirmahal	15.00
9	Safdarabad	12.24
10	Sargodha	11.11
11	Chak Jhumra	9.52
12	Pakpattan	9.38
13	Pattoki	9.09
14	Shahkot	8.62
15	Nankana Sahib	8.57
16	Bhalwal	8.33
17	Muridke	8.00
18	Pindi Bhattian	7.14
19	Daska	7.14
20	Vehari	6.67
21	Pasrur	6.25
22	Jalal pur Jattan	5.56
23	Wazirabad	5.26
24	Hafizabad	5.26
25	Malikwal	5.26
26	Sahiwal	5.00
27	Phalia	4.76
28	Shahpur	4.76
29	Chunian	4.65
30	Kamalia	3.70
31	Sialkot	3.33
32	Sambrial	3.33
33	M.B.Din	3.13
34	Sheikhupura	3.00
35	Gujrat	2.78
36	Kasur	2.70
37	Sharqpur	2.04
38	Lahore	1.56

Tehsil wise percentage of hot spots of Brown Leaf Spot

Sr#	TEHSIL	%AGE
1	Minchinabad	30.00
2	Phalia	19.05
3	Malikwal	15.79
4	M.B.Din	15.63
5	Sahiwal	15.00
6	Sillanwali	12.50
7	Hafizabad	10.53
8	Lalian	10.00
9	Lahore	7.81
10	Ferozwala	7.69
11	Kamalia	7.41
12	Nankana Sahib	5.71
13	Shahpur	4.76
14	Shakar Garh	3.85
15	Pindi Bhattian	3.57
16	Gujranwala	3.45
17	Bhowana	3.33
18	Chiniot	3.13
19	Gujrat	2.78
20	Sheikhupura	1.00

Tehsil wise percentage of hot spots of BLB

Sr#	TEHSIL	%AGE
1	Bhalwal	16.67
2	Wazirabad	10.53
3	Gujranwala	6.90
4	Kamoki	6.45
5	Hafizabad	5.26
6	Phalia	4.76
7	Sahiwal	4.55
8	Kamalia	3.70
9	M.B.Din	3.13

Tehsil wise percentage of hot spots of Sheath Blight

Sr#	TEHSIL	%AGE
1	Noshera Virkan	7.14
2	Gujranwala	6.90
3	Sahiwal	5.00
4	Kamoki	3.23
5	Lahore	1.56

Tehsil wise percentage of hot spots of Blast

Sr#	TEHSIL	%AGE
1	D.G Khan	40.00

2	Kot Chatta	33.33
3	Ali Pur	14.29
4	Muzaffer Garh	8.33
5	Sahiwal	4.17

FORECAST FOR THE NEXT WEEK

Meteorological data of the current week 2019-2020

METEOROLOGICAL DATA FOR THE 1st WEEK September 2020 RICE ZONE								
Districts	2020				2019			
	Temperature		R.H%	Rainfall (mm)	Temperature		RH%	Rainfall (mm)
	Max.	Min.			Max.	Min.		
Gujranwala	35.54	23.51	75.11	154.11	34.78	24.12	73.87	102.72
Hafizbad	34	27	73	135	38.15	30.25	70.25	5
Sialkot	33	24	78	275.0	31.0	20.0	79.0	268.0
Narowal	32.3	21.8	91.5	105.0	31.2	23.3	81.6	35.0
Gujrat	32.8	25.6	67.5	2.5	35.2	25.8	62.4	
M.B.Din	34	24	51	30.0	35	25	48	24.0
Lahore	34.2	26.1	77.2	18	32.62	24.5	62.5	3.05
Sheikhupura	33.3	25.1	58.5	22	34.5	25.4	63	23
Ferozwala	33.22	26.66	69.77	15.0	34.5	25.4	63.0	23.0
Nankana	32.33	25.78	62.56	25	35.54	26.09	85.19	4
Kasur	34.429	26.143	69	12.143	36.429	30.429	71.714	0.57
Multan	34	29.1	84.9	69	37	30.2	70.6	22.3
Khanewal	32	26	84.2857	109	38.2571	29.2857	66.5714	3
Vehari	34.7778	27.6667	76.4444	36	37.1111	29.4444	69.7222	21
Lodhran	32.4286	27.2857	83.5	55.3	38.1429	30.1429	62	0
Sahiwal	33.24	25.52	83.4	27	36.86	26.96	71.8	0
Pakpattan	32.7	26.7	66.6	63	36.1	28.4	52.6	0
Okara	33	28.3	80	34	34.1	25.3	89	14
Bahawalpur	34.03	25.91	74.55	7.6	38.53	28.55	69.15	1.4
Bahawalnagar	34.8333	22.4167	69.1167	8.9	37.625	27.3125	61.125	0
R.Y.Khan	32.13	25.38	44.63	21.71	40.29	27.86	77.71	3
D.G. Khan	35.7143	27.1429	76.2143	135	39.2857	29.1429	69	0
Muzaffar Garh	34.8	26.2	48.2857	9.28571	37.44	29.7	46.5714	0
Rajanpur	42.4	30.2	62.4	8	40.3	25.4	64.4	0
Layyah	31.7143	23.4286	78	94	37.42	25.28	53.14	14
TOT/AVG	33.88	25.88	71.42	58.86	36.30	26.93	67.35	23.63

Pest Forecast for Next 15 days				
Avg. Temperature for next 15 days = 31.5 °C				
Avg. Relative Humidity for next 15 days= 28.34%				
Sr. No.	Pest Name	Opt. Temperature	%Humidity	Pest Prediction
1	Rice Borer	17-30°C	45-80%	May Sustain
2	Leaf Folder	25-30°C	45-80%	May Sustain
3	WPBH	25-29°C	80-90%	-
4	BPH	28-30°C	>80-90%	-
5	TOKA	24-40°C	30-80%	May Sustain
6	FOOT ROT	30-35°C	<70%	May Sustain
7	B.L.B	25-34°C	<70%	May Sustain
8	B.L.S	16-36°C	86-100%	May Sustain
9	SHEATH BLIGHT	28-32°C	85-100%	May Sustain
10	BLAST	25-30°C	90-95%	May Sustain

RECOMMENDATION

HOPPER MANAGEMENT (Brown Plant Hopper/White Backed Plant Hopper)

- Drain out irrigation water in the field for 3 to 4 days.
- Install yellow sticky for monitoring of plant hoppers.
- Avoid excessive use of nitrogenous fertilizers..
- Apply granular insecticides with last irrigation in those fields where hopper infestation is observed.
- Control the pest without delay when population reaches ETL

BROWN LEAF SPOT MANAGEMENT

- Avoid water stress before maturity.
- Control the pest with one of the following fungicides;

S#	Common Name	Brand Name	Dose / Acre
1	Propineb 70 WP	Gift, Cover, Protest	800 gm
2	Mancozeb 80 WP	Shelter, Dithane-M	800 gm
3	Propiconazole 25 EC	Tilt	80 ml

BACTERIAL LEAF BLIGHT MANAGEMENT

- Use disease free seeds for next crop.
- Spray copper based fungicides without delay when disease incidence is observed.

S#	Common Name	Brand Name	Dose / Acre
1	Copper oxychloride	Cobox,clipper	500 gm
2	Copper hydroxide	Kocide, champion	250 gm
3	Kasugamycin + Copper oxychloride 47% WP	Profile	240-400ml

PADDY BLAST MANAGEMENT

- For leaf blast maintain water level at 3 -4 inches to ensure that soil is covered.
- Avoid late use of nitrogenous fertilizers.
- Control the disease with one of the following fungicides

S#	Common Name	Brand Name	Dose / Acre
1	Trifloxystrobin+Tebuconazole 75%WP	Nativo	65 gm
2	Azoxystrobin 25 % SC	Primacy	100 ml
3	Difenoconazole 250 EC	Score	125 ml

SHEATH BLIGHT MANAGEMENT

- Plant at the optimum time for a specific variety. Avoid extremely early planting.
- Control the disease with one of the following fungicides

S#	Common Name	Brand Name	Dose / Acre
1	Trifloxystrobin+Tebuconazole 75%WP	Nativo	65 gm
2	Azoxystrobin +Difenoconazole	Amistar top, Reardo	200 ml
3	Hexaconazole	Contaf Plus	400 ml

ECONOMIC THRESHOLD LEVELS OF RICE PESTS

INSECT PESTS	ECONOMIC THRESHOLD LEVELS
Borers (White, Yellow & Pink)	0.5% attack on rice nursery while 8-10 Moth/Trap/Night & 5% dead heart on rice crop.
Toka	2-3 per net sweep.
Leaf Folder	2 rolled leaves per plant in July-August & 3 rolled leaves per plant in September-October.
Brown Plant Hopper	5 Nymphs or Adults per plant in July-August & 10 Nymphs or Adults per plant in September-October.
White Backed Plant Hopper	10 Nymphs or Adults per plant in July-August & 15 Nymphs or Adults per plant in September-October.
Hispa	1 per plant
Diseases	On appearance