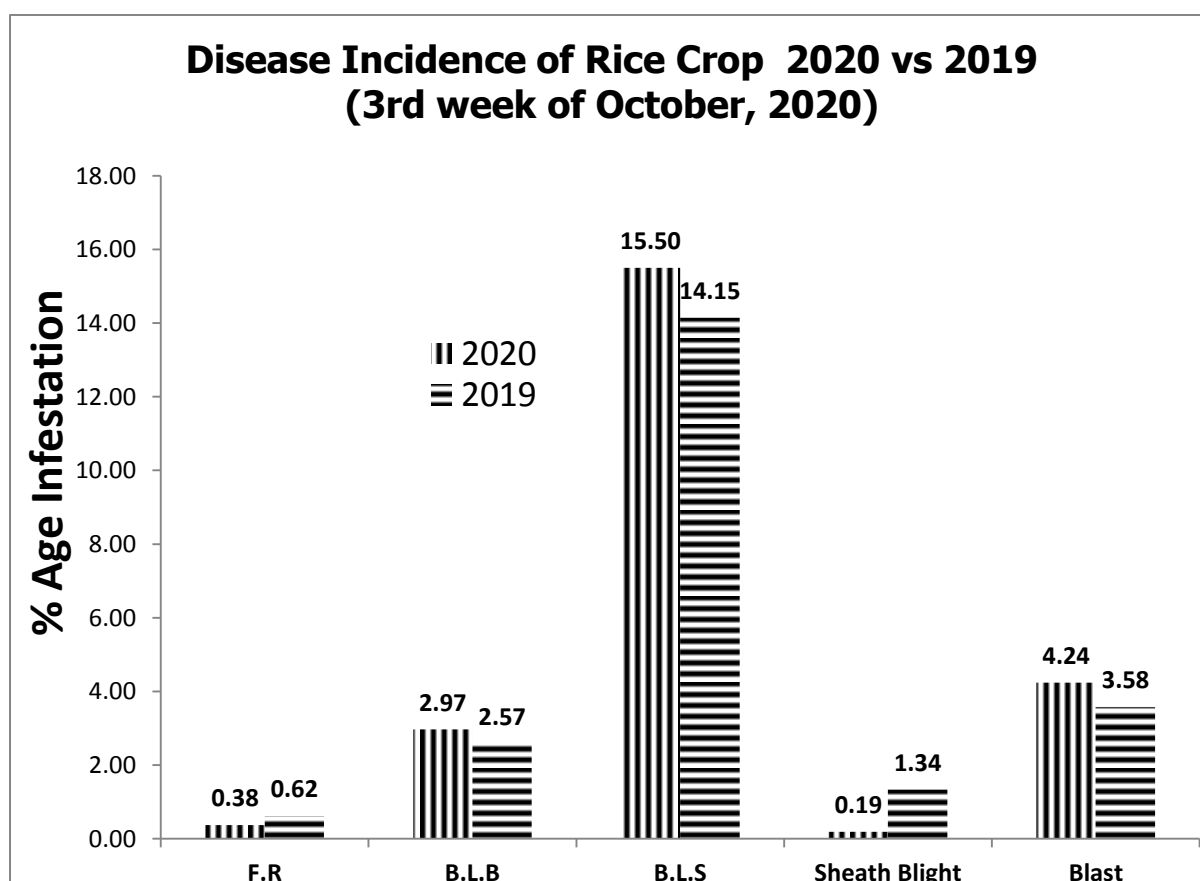
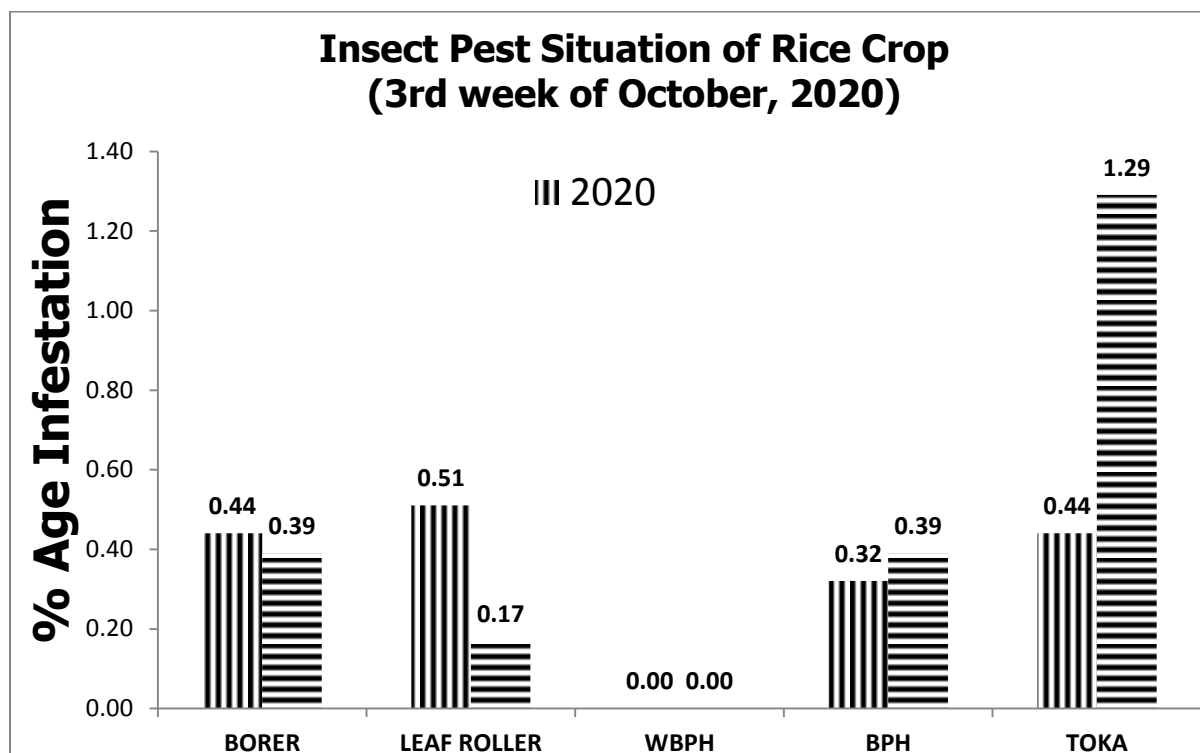


GRAPHICAL PEST SITUATION ON RICE CROP IN PUNJAB DURING 3RD WEEK OF OCTOBER, 2020



PEST SITUATION ON RICE CROP IN PUNJAB DURING 3RD WEEK OF OCTOBER, 2020

Pest Situation of Rice Pests								
Sr. No.	Pest Name	%age of spots						Remarks
		Current Week		Previous Week		Corresponding week of Last Year		
		AETL	BETL	AETL	BETL	AETL	BETL	
1	RICE BORER	0.44	7.72	0.39	8.45	0.39	7.61	Sustaining
2	LEAF FOLDER	0.51	7.97	0.78	10.47	0.17	7.38	Decreasing
3	WPBH	0.00	1.71	0.00	1.06	0.17	1.62	Low
4	BPH	0.32	4.05	0.11	2.69	0.39	4.64	Increasing
5	TOKA	0.44	17.33	0.39	18.81	1.29	14.93	Sustaining
6	FOOT ROT	0.38	-	1.40	-	0.62	-	Decreasing
7	B.L.B	2.97	-	2.80	-	2.57	-	Sustaining
8	B.L.S	15.50	-	14.28	-	14.15	-	Increasing
9	SHEATH BLIGHT	0.19	-	0.78	-	1.34	-	Low
10	BLAST	4.24	-	3.53	-	3.58	-	Increasing
NO. OF TOTAL SPOTS VISITED		1581						
TOTAL AREA VISITED (Acres)		11417.4						

Tehsil wise percentage of hot spots of Rice Borer

Sr.	TEHSIL	%AGE	Sr.	TEHSIL	%AGE
1	Ahmadpur	38	2	Bahawalpur	16.7
3	Minchinabad	3.3			

Tehsil wise percentage of hot spots of Rice Leaf Folder

Sr.	TEHSIL	%AGE	Sr.	TEHSIL	%AGE
1	Karor	40	4	Kot chutta	13
2	Ahmadpur	25.0	5	Bahawalpur	11
3	D.G Khan	12.5			

Tehsil wise percentage of hot spots of White-Backed Plant Hopper

No hot spot found.

Tehsil wise percentage of hot spots of Brown Plant Hopper

Sr.	TEHSIL	%AGE	Sr.	TEHSIL	%AGE
1	Minchinabad	10	3	Narowal	3.3
2	Shakar Garh	3.6			

Tehsil wise percentage of hot spots of Rice Toka

Sr.	TEHSIL	%AGE	Sr.	TEHSIL	%AGE
1	Malikwal	6	4	Sharqpur	4
2	Phalia	5.3	5	Nankana Sahib	3
3	M.B.Din	4.2	6	Lahore	2

Tehsil wise percentage of hot spots of Foot Rot

Sr.	TEHSIL	%AGE	Sr.	TEHSIL	%AGE
1	Kehror Pacca	50	3	Dunya Pur	25.0
2	Lodhran	33.3	4	Sargodha	13

Tehsil wise percentage of hot spots of Bacterial Leaf Blight

Sr.	TEHSIL	%AGE	Sr.	TEHSIL	%AGE
1	Phalia	16	12	Kamoki	7.7
2	Kharian	13.6	13	Kamalia	8
3	Sahiwal	13.0	14	Sambrial	7
4	Zafarwal	13	15	Nankana Sahib	5
5	M.B.Din	13	16	Gujranwala	4.8
6	Malikwal	12	17	Ferozwala	4.7
7	Daska	12	18	Pasrur	4.2
8	Gujrat	12	19	Shakar Garh	3.6
9	Jalal pur Jattan	11	20	Lalian	3.3
10	Pirmahal	9.1	21	Sialkot	3.1
11	Pattoki	8.3	22	Kasur	2.8

Tehsil wise percentage of hot spots of Brown Leaf Spots

Sr.	TEHSIL	%AGE	Sr.	TEHSIL	%AGE
1	Sarai Alamgir	67	29	Lahore	15.9
2	Jalal Pur	67	30	Muridke	15.8
3	Jahanain	60	31	Nankana Sahib	15.8
4	Minchinabad	57	32	Shorkot	15.0
5	Sahiwal	53	33	Chak Jhumra	14.8
6	Kabirwala	50	34	Narang Mandi	14.3
7	Bhera	42	35	Shujabad	14.3
8	Khushab	41	36	Mailsi	14.3
9	Mian Channu	40	37	Sialkot	12.5
10	Vehari	40	38	Pasrur	12.5
11	Karor	40	39	Jaranwala	12.5
12	Hafizabad	38	40	Malikwal	11.8
13	Multan	38	41	Shakar Garh	10.7
14	Gujrat	35	42	Phalia	10.5
15	Gujranwala	33	43	Narowal	10.0
16	Jalal pur Jattan	33	44	Baddomalhi	10.0
17	Khanewal	33	45	Lalian	10.0
18	Kharian	32	46	Sheikhupura	9.5
19	Pindi Bhatian	31	47	Sahiwal	8.7
20	Burewala	30	48	M.B.Din	8.3
21	Zafarwal	25	49	Pattoki	8.3
22	Ahmadpur	25	50	Kamoki	7.7
23	Ferozwala	21	51	Daska	7.7
24	Bhowana	21	52	Kamalia	7.7
25	Shahkot	20	53	Sambrial	6.7
26	Chiniot	18	54	Pakpattan	5.1
27	Pirmahal	18	55	Sharqpur	2.0
28	Safdarabad	16.3			

Tehsil wise percentage of hot spots of Sheath Blight

Sr.	TEHSIL	%AGE
1	Silanwali	22
2	Sahiwal	5

Tehsil wise percentage of hot spots of Rice Blast

Sr.	TEHSIL	%AGE	Sr.	TEHSIL	%AGE
1	Jatoi	40	16	Shakar Garh	10.7
2	Karor	40	17	Sambrial	10.0
3	Silanwali	33	18	Burewala	10.0
4	Kot Addu	33	19	Zafarwal	9.4
5	Alipur	33	20	Pirmahal	9.1
6	Shahpur	25	21	Kasur	8.3
7	D.G Khan	25	22	Kamoki	7.7
8	Layyah	20	23	Pakpattan	7.7
9	Taunsa	20	24	Khushab	6.9
10	Bhera	17	25	Sialkot	6.3
11	Sahiwal	16	26	Chunian	6.3
12	Minchinabad	13	27	Depalpure	5.6
13	Pasrur	13	28	Nankana Sahib	5.3
14	Kot chutta	13	29	Kamalia	5.1
15	Daska	12			

Meteorological data of the current week 2020-2021

METEOROLOGICAL DATA FOR THE 3RD WEEK OF OCTOBER, 2020								
Districts	2020				2019			
	Temperature		R.H%	Rainfall (mm)	Temperature		RH%	Rainfall (mm)
	Max.	Min.			Max.	Min.		
Gujranwala	33	19	73	0	35	20	70	0
Hafizbad	34	18	68	0	33.6	19	72.34	9
Sialkot	29	18	65	0	28	17	65	20
Narowal	30	18	79	6	31	17	68	0
Gujrat	34.33	19.33	67	0	31.1	15	72	10
M.B.Din	32	16	40	0	30	14	56	2
Lahore	32	23	52	0	32	21	61	1
Sheikhupura	33	21	43	0	31	21	58	5
Ferozwala	31	21	60	0	32	21	60	1
Nankana	34	22	31	0	32	18	57	13
Kasur	35	19	31	0	29	19	43	0
Faisalabad	36.25	17.45	67	0	36.5	16.5	61	0
Jhang	36	17	46	0	32.8	19.2	57	2.9
Toba Tek Singh	37	17	80	0	34	20	83	2
Multan	35	18	70	0	34	21	82	0
Khanewal	35	20	64	0	35	21	70	0
Vehari	34	19	69	0	34	22	68	0
Lodhran	35	20	67	0	36	22	69	0
Sahiwal	35	17	58	0	33	20	65	0
Pakpattan	35	18	54	0	36	20	54	0
Okara	35	22	61	0	35	21	65	0
Bahawalpur	36	19	53	0	34	21	76	0
Bahawalnagar	36	19	51	0	35	20	57	0
R.Y.Khan	37	23	35	0	37	23	79	0
D.G. Khan	34	21	66	0	34	22	50	0
Muzaffar Garh	35	22	49	0	34	21	46	0
Rajanpur	39	19	63	0	36	20	60	0
Layyah	33	17	62	0	33	20	61	3
TOT/AVG	34.28	19.18	57.96	0.23	33.45	19.69	63.68	2.43

Pest Forecast for Next 15 days				
Avg. Temperature for next 15 days = 21.78°C				
Avg. Relative Humidity for next 15 days= 13.82%				
Sr. No.	Pest Name	Opt. Temperature	%Humidity	Pest Prediction
1	Rice Borer	17-30°C	45-80%	May Sustain
2	Leaf Folder	25-30°C	45-80%	May Decrease
3	WPBH	25-29°C	80-90%	May be Low
4	BPH	28-30°C	>80-90%	May be Low
5	TOKA	24-40°C	30-80%	May be Low
6	FOOT ROT	30-35°C	<70%	May Sustain
7	B.L.B	25-34°C	<70%	May Sustain
8	B.L.S	16-36°C	86-100%	May Increase
9	SHEATH BLIGHT	28-32°C	85-100%	May Sustain
10	BLAST	25-30°C	90-95%	May Increase

RECOMMENDATION

RICE BORER MANAGEMENT

- Use resistant varieties.
- Discard the infested plants while transplanting.
- Ensure proper timing of planting and synchronous planting, harvest crops at ground level to remove the larvae in stubble, remove stubble and volunteer rice, plow and flood the field.
- At seedbed and transplanting, handpick and destroy egg masses.
- Raise level of irrigation water periodically to submerge the eggs deposited on the lower parts of the plant.
- Clipp off the tips of the seedlings at the time of transplanting because the eggs of yellow and white stem borers are laid near the tip of the leaf blade. It will reduce a considerable number of egg masses and young larvae of the stem borers.
- Install light traps up to September to monitor moth population of stem borers.
- Use balanced Fertilizers (NPK) within 45 days after transplanting of nursery.
- Complete application of urea up to 31st August because due to late application of Urea, the plant becomes succulent and dark-green which attracts the insects, especially stem borers and leaf roller and helps in their rapid multiplication.

BROWN LEAF SPOT MANAGEMENT

- Use resistant varieties.
- Contact your local agriculture office for an up-to-date list of available varieties.
- Follow rice with a different crop, or fallow period.
- Avoid ratooning.
- Flood and plow field after harvesting if possible.
- Remove grassy weeds from fields and borders.
- Reduce density of planting.

FOOT ROT SPOT MANAGEMENT

- Avoid sowing of seed obtained from infected crop.
- Uproot the diseased plants and destroy them.
- Use Potash 1 Bag within 14 days.

BROWN LEAF SPOT MANAGEMENT

- Control the pest with one of the following pesticides

S#	Common Name	Brand Name	Dose / Acre
1	Propineb 70 WP	Gift, Cover, Protest	800 gm
2	Mancozeb 80 WP	Shelter, Dithane-M	800 gm
3	Propiconazole 25 EC	Tilt	80 ml

BACTERIAL LEAF BLIGHT MANAGEMENT

- Use disease free seeds for next crop.
- Spray copper based fungicides.

PADDY BLAST MANAGEMENT

- For leaf blast, reflood if field has been drained. Maintain water level at 3-4 inches to ensure that soil is covered.
- Control the pest with one of the following pesticides

S#	Common Name	Brand Name	Dose / Acre
1	Kasugamycin 6% WP	Fork	250 gm
2	Trifloxystrobin+Tebuconazole 75%WP	Nativo	65 gm
3	Azoxystrobin 25 % SC	Primacy	200 ml
4	Difenoconazole 250 EC	Score	125 ml

ECONOMIC THRESHOLD LEVELS OF RICE PESTS

INSECT PESTS	ECONOMIC THRESHOLD LEVELS
Borers (White, Yellow & Pink)	0.5% attack on rice nursery while 8-10 Moth/Trap/Night & 5% dead heart on rice crop.
Toka	3 per net on rice nursery & 5 on rice crop.
Leaf Folder	2 rolled leaves per plant in July-August & 3 rolled leaves per plant in September-October.
Brown Plant Hopper	15 Nymphs or Adults per plant in July-August & 20 Nymphs or Adults per plant in September-October. Or 7-10 Nymphs or Adults per net
White Backed Plant Hopper	15 Nymphs or Adults per plant in July-August & 20 Nymphs or Adults per plant in September-October. Or 7-10 Nymphs or Adults per net
Hispa	1 per plant
Diseases	On appearance